



QUALITY
PORTABLE CABINS

**MANUFACTURER &
SUPPLIER OF
PORTABLE CABIN**



 **+91 99674 63733**

 **info@qualityportablecabins.in**

 **www.qualityportablecabins.in**



qualityportablecabins

About Us

We, Quality Portable Cabins, Are One Of The Foremost Manufacturers Of An Extensive Array Of Ms Portable Cabin, Gi Portable Cabin And Many More. In Adding To This, Owing To Their Strong Construction, Premium Quality, Long Service Life, And Affordable Prices, These Prefabricated Cabin Ranges Are Highly Appreciated Among Our Patrons.

Company Is Using Latest Machineries And Technology. Real Steel Keeps On Upgrading Its Manufacturing Set-up, Design Capability And Workmanship To Deliver Superior Quality Products With On-time Deliveries And Without Any Compromise On Quality.

Spread Over Large Land, Our Infrastructure Is Divided Into Manufacturing, Warehousing, And Packaging, Quality Testing, And Sales & Marketing Units. Supported Well By A State-of-the-art Infrastructure, We Have Been Able To Manufacture High-quality Prefabricated Cabins In Bulk Quantities. Our Professionals Are Highly Qualified That Support Us To Offer Products As Per The Client's Needs. Our Company Is Operating Under The Supervision Of Our Mentor, Mr. Anas Mahimkar. He Also Encourages Employees By Consulting Them Before Introducing Any Policies In The Company.

Why Chose Us

We Are Offering The Best Quality Portable Cabins In The Market At The Very Leading Price,

Owing To Our Fare Policies,

We Are Specialists In Designing High Quality Cabins That Are Very Economical And Can Be Easily Transported From One Place To Another,

Our Company Manufactures Such Cabins And Buildings In All Possible Sizes Keeping,

Key Factors That Enable Us To Be Reputed Position In The Market :

Quality Assurance, Durability, Corrosion Resistance, Longevity,

Attractiveness, Excellent Finish,

Low Maintenance, Transparent Deals.

Specification

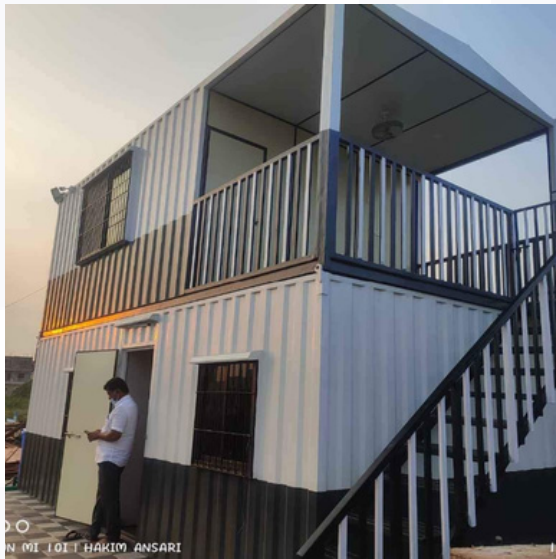
Sr.No	Components	Description
1	Bottom Frame	100mm x 50mm "ISMB"
2	Top Frame	50mm x 50mm MS Sq Pipe
3	Stiffener Bottom	100mm x 50mm M.S. Sq. Pipe
4	Stiffener Top	40 x 20 M.S. Sq. Pipe
5	Side Post	65 mm x 65 mm MS Sq. Pipe
6	Panelling Outside	Specially Corrugated GI Sheet Properly Welded.
7	Internal Wall Panelling	MDF Board and ACP Sheet for Toilet
8	Roof Outside	Specially GI SHEET - Properly Sloped and water tight. WITH Tar Coal Sheet Used on Top for Leakproof
9	False Ceiling	MDF Board
10	Bottom Flooring	Cement Fibre Board with Vinyl Carpet over it
11	Aluminium Windows	Double Shutter Sliding Aluminium Powder Coated Windows Safety Grills.
12	Door	Insulated with for locking agreement, Hold draft & Handles.
13	insulation	Glass Wool density of 16kg/CUBICMETER RB glass Wool Insulation 25mm
14	Wiring	All wiring shall be concealed type & shall be of PVC insulated copper wire.
15	Electrical Fittings	All electrical fittings in the Portable Cabin shall be with capacity of 220-240 V, AC 50Hz.Led Panel Light, Door Light(Bulkhead), Cabin Fan, Switches, Sockets, Air Conditioners Point (MCB) (All Type Air Conditioning Systems as desired upon can be installed).Electrical fittings brands are as of standard with defined product warranty.
16	Ear thing	Earthing Point shall be provided for SAFETY
17	Outside Painting	Phosphating the Cabin and painting with 1 coat of Epoxy primer with Two Coat of Epoxy Paint.
18	Legs	6 inch height, 6 legs Four legs at all four corners TWO LEGS AT MIDDLE
19	Hooks	Specially formed Hooks for Easy lifting and Shifting
20	Additional	Tar Coal Sheet Used on Top for Leakproof
21	Furniture	18mm particle board

STRUCTURAL VIEW



PORTABLE OFFICE CABINS

Outer View



Inner View



TOILET CABINS

Outer View



Inner View



SECURITY CABINS

Outer View



Inner View



ACCOMMODATION

Outer View



Inner View

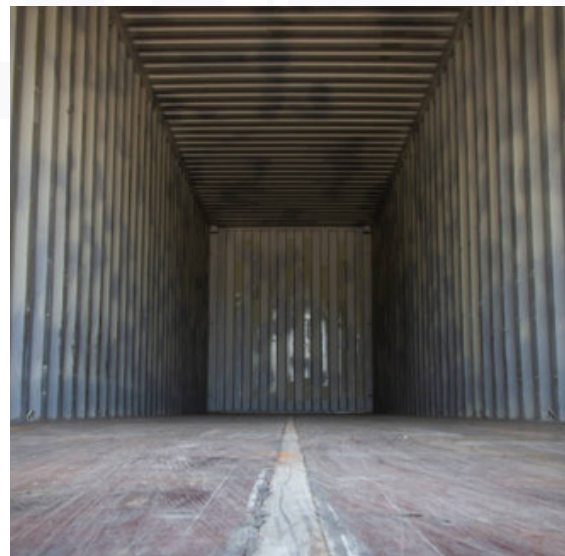


STORAGE CONTAINER

Outer View



Inner View





QUALITY
PORTABLE CABINS



**Branches: Mumbai,
Hydrabad, Uttar pradesh, Gujarat**



Postal address

A/02, Dream Height,
Sonaji Nagar,
Mumbra, Thane 400612.



Factory address

Survey no: 87, Plot no: 6,
Near Khan Compound,
Shilphata Thane 400612.